

BALTOSCOPE IPS012



- Part of: « **baltoscope Inspection Suite** »
- Image format: **tiff, bmp, jpeg, raw, dcm**
- DICOM & DICONDE compliant
- Add-on features available
- Pre-programmed filters
- Grey level window
- Recommendations:**
- Intel Core i5 or superior
- 4 Gb RAM
- Video grabber NVIDIA QUADRO 2000
- HDD: 250 Gb SATA 6Gb/s, 7200 RPM
- Windows 7 Pro, 64 bits

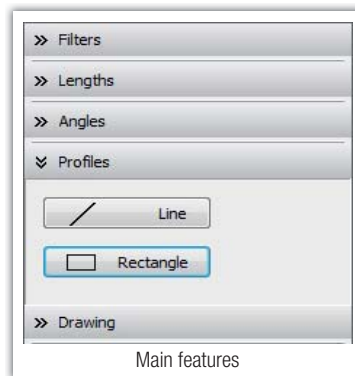
CHARACTERISTICS

- Optimized to work with High contrast & luminance B&W monitors
- Automatic contrast adjustment on the entire image or on a ROI
- 1 to 4 images displayed for comparison
- Interactive contrast & brightness improvements using mouse motions
- Grey profile
- Zoom facilities
- Rotation & mirrors
- Pre-programmed filters (Sharpening, flattening, edge enhancement, etc.)
- Measuring tools (distance & angle)
- Insertion of text & shapes (circle, rectangle, line, arrow, etc.)



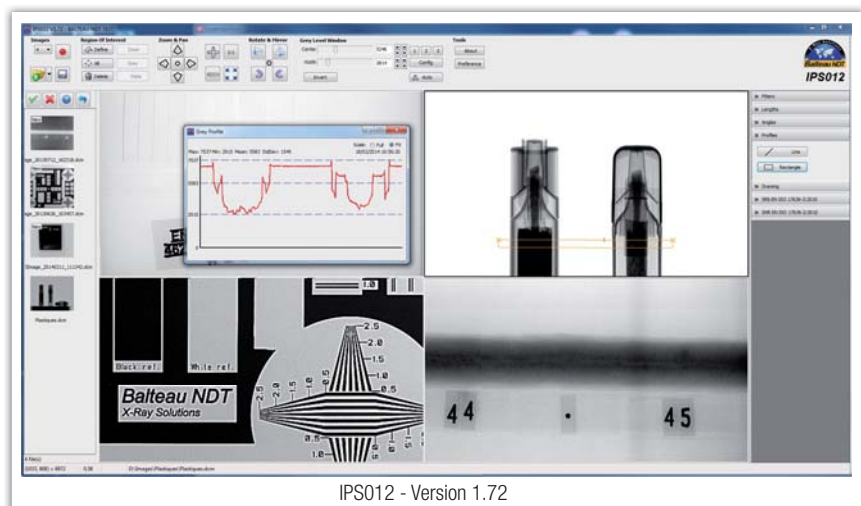
KEY ADVANTAGES

- Part of the « Baltoscope Inspection Suite »
- Operator's own filters
- Detector qualification pdf report
- Different acceptance of image possible
- Works with most image format
- DICOM & DICONDE compliant
- Metadata customizable
- Pipe & Quick record for image evaluation
- Add-on features available
- Designed to work with CR, DR, LDA & more



IPS012 is the latest Image Processing Software for the x-ray industry designed by Balteau NDT. Part of the "Inspection Suite" made of 12 different modules able to control all aspects of your radioscopic system; IPS012 has been developed by our team of engineers to make the use of the software extremely easy.

Outstripping the competition, Balteau is the first to create a modular suite of software built on the same frame to create a friendly environment of work and also ensuring the complete compatibility between all components, modules of your installation. The suite has been designed to be used with Balteau's systems but is also 100% compatible with most of the existing and current ones.



Allowing direct link to the Acquisition module, the taken snapshots will automatically be transferred to IPS then processing the image can start. So many different features such as "Region of interest", "Grey level window", "Filters", etc. are included as a standard but not only, a lot of very useful options are also available.

IPS012 embeds all common and usual processing algorithms as well as novelties that will soon find their applications into your daily jobs.



Recommendations

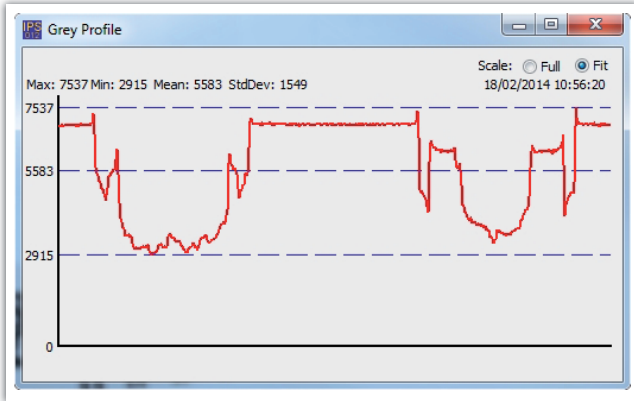
Computer

- Intel Core i5 or superior
- 4 Gb RAM
- Video grabber NVIDIA QUADRO 2000

- HDD: 250 Gb SATA 6 Gb/s, 7200 RPM
- With Windows OS W764B pro

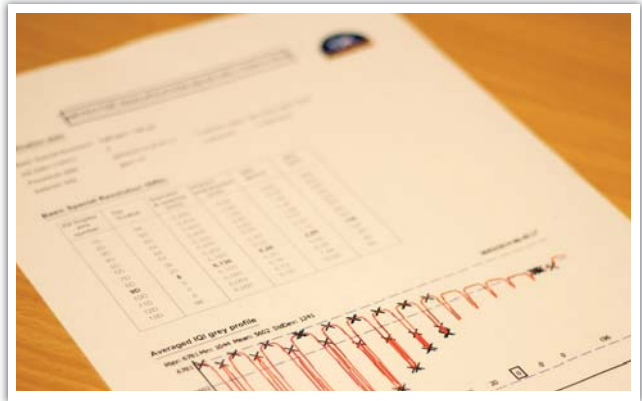
Characteristics

- Bits : Limited by detector (not included)
- Image format : tiff, bmp, jpeg, raw, dcm



Grey Profile

The grey profile has been created to help the user to identify easier possible defects that can sometime be hard to see but also to ease the measure of them. it is displayed as a graph representing the grey level from a previously defined line or rectangle on the image.



Detector qualification, Signal to Noise Ratio data, etc. (Optional)

IPS012 can deliver a full report with an objective measure of the basic spacial resolution complying with the standard EN ISO 17636-2:2010 and/ or to measure the signal to noise ratio. it can be very useful when precision is important to see small defects and can then be added to the file with all the taken snapshots.

OPTIONAL EQUIPMENT & ADD-ON FEATURES

- High resolution, high contrast BARCO B&W monitors
- Professional 19" industrial computer
- DICONDE compatibility including programmable metadata
- Measurement of Basic Spatial Resolution (Srb)
- Measurement of the signal to noise ratio (S/N)
- External high capacity archiving system
- & more

BALTOSCOPE INSPECTION SUITE

IPS012 is part of a complete suite of software dedicated to serve the x-ray industry and designed by Balteau NDT. For more information about any of the software or the complete suite, do not hesitate to contact us via marketing@balteau.com

Dicom to AVI	Acquisition	Remote Control	Motor Control	Collimator	I/O Controller	Automation	Teaching	Database	Server	Archive

Produced by:

Balteau NDT
Rue Voie de Liège, 12
B-4681 Hermalle Sous Argenteau
Belgium

www.balteau.com
balteau@balteau.com
Tel. +32 (0) 4 374 75 75
Fax +32 (0) 4 374 75 85

Distributed by:

